

3500

MODELS

Ideal for :

- Furnaces
- Environmental chambers
- Autoclaves
- Fermenters
- Reactors
- Melt pressure
- Process applications

Features :

- 2 PID loops
- 50 Programs
- Precision PV input
- Carbon potential
- Maths/logic/timers
- Custom user interface
- Recipes
- Modbus RTU
- Ethernet Modbus TCP
- Profibus DP
- DeviceNet



Advanced Controller/Programmer Specification Sheet

Eurotherm's latest range of advanced process controllers provide precision control of temperature and a host of other process variables together with an abundance of advanced options making it the most adaptable product in its class.

The emphasis is on flexibility yet the 3500 controllers still maintain ease of use. A simple 'Quick Start' code is used to configure all the basic functions essential to controlling your process. This includes input sensor type, measurement range, control options and alarms making 'Out the Box' operation truly achievable. More advanced features are configured using a PC based graphical configuration tool enabling users to pick function blocks from a library then connect them together using soft wiring.

The large 5-digit display provides a clear and unambiguous indication of the process value. A four-line message centre provides custom or standard views of important information to the user while vertical and horizontal bargraphs provide at a glance visual indication of the process.

Dual Loop

Two independent PID loops make the 3500 ideal for interactive processes such as those found in carburising furnaces, environmental chambers and autoclaves. The loops may also be 'soft' wired together in creative ways to create cascade, ratio or other intelligent control strategies

Setpoint Programmer

Heat treatment and other processes often require the ability to change setpoints with time. The dual loop 3500 has two programmers which can be configured as synchronised or independent programs. 50 programs with up to two channels can be stored with a total of 500 segments.

Input/Output Flexibility

A range of plug-in I/O modules caters for individual application requirements minimising stock and spares holding. A total of fifteen module types, including relay, logic, triac and analogue, are available to fit into either three slots on 3508 or six slots on 3504.

Carbon Potential

The 3500 calculates carbon potential from measuring both the oxygen concentration and temperature of a furnace using a zirconia probe. This enables a dual loop 3500 to be used to control both carbon potential and temperature in an atmosphere controlled furnace.

Customised Solutions

The 3500 is more than just a process controller. It also provides a selection of application blocks including maths, logic and timing functions offering the ability to develop custom solutions and create cost effective machine controllers. The custom User Page feature allows an operator to view current information in a style most suitable to the process and terminology of the industry.

Communications

The 3500 is designed to integrate seamlessly with programmable logic controllers and other supervisory systems. A wide range of serial communication options are catered for including EIA232 and EIA485 using the Modbus RTU protocol along with Profibus DP and DeviceNet. Ethernet connectivity is achieved using the Modbus TCP protocol.

Recipes

Using a PC tool recipes can be created that can be used to change the operating parameters of the 3500 simply by selecting a new recipe via the HMI. This is very useful where multiple products are processed using the same controller but require different parameters to be set.

Infrared Configuration Adaptor

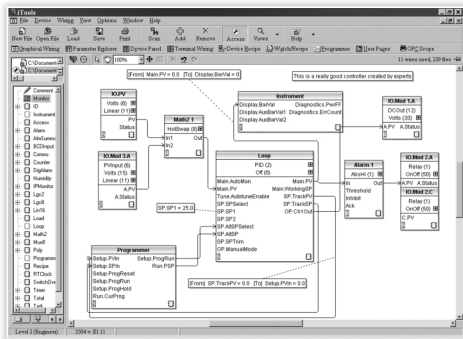
Communications to the 3500 can be achieved by using an infrared adaptor. Clipping onto the front fascia it provides iTools communications allowing configuration and commissioning to be performed without the need to access the rear terminals of the controller.



Infrared clip connected to the 3504

iTools Graphical Wiring Editor

The GWE is an extremely easy way to create applications. It allows users to select the function blocks they wish to use in their application then connect them together using 'Soft Wiring'. The GWE gives the user a pictorial view of exactly what he has configured and can also be used to monitor runtime conditions.



TECHNICAL SPECIFICATION

General

Environmental performance	
Temperature limits	Operation: 0 to 50°C Storage: -10 to 70°C
Humidity limits	Operation: 5 to 95% RH non condensing Storage: 5 to 95% RH non condensing
Panel sealing	IP65, Nema 4X
Vibration	2g peak, 10 to 150Hz
Altitude	<2000 metres
Atmospheres	Not suitable for use in explosive or corrosive atmosphere

Electromagnetic compatibility (EMC)

Emissions and immunity	BS EN61326
Suitable for domestic, commercial and light industrial as well as heavy industrial. (Domestic/light (Class B) emissions. Industrial (Class A) environmental immunity emissions.	
With Ethernet module fitted product only suitable for Class A emissions.	

Electrical safety

BS EN61010	Installation cat. II; Pollution degree 2
INSTALLATION CATEGORY II The rated impulse voltage for equipment on nominal 230V mains is 2500V.	
POLLUTION DEGREE 2 Normally, only non-conductive pollution occurs. Occasionally, however, a temporary conductivity caused by condensation shall be expected	

Physical

Panel mounting	3508: 1/8 DIN 3504: 1/4 DIN
Weight	3508: 400g 3504: 600g
Panel cut-out dimensions:	3508: 45W x 92Hmm 3504: 92W x 92Hmm
Panel depth	Both 148mm

Operator interface

Type	STN LCD with backlight
Main PV display	3508: 4 1/2 digits, green 3504: 5 digits, green
Message display	3508: 8 character header and 3 lines of 10 characters 3504: 16 character header and 3 lines of 20 characters
Status beacons	Units, outputs, alarms, program status, program events, active setpoint, manual, remote SP
Access levels	3 operator plus config. Password protected

User pages

Number	8
Parameters	64 total
Functions	Text, conditional text, values, bargraph
Access level	User selectable (level 1, 2 or 3)

Power requirements

Supply voltage	85 to 264Vac, -15%, +10%, 48 to 62 Hz, max 20W (3508 15W) 24Vac, -15%, +10%, 24Vdc, -15% +20% ±5% ripple voltage max 20W (3508 15W)
Inrush current	High Voltage (VH): 30A duration <100µs Low Voltage (VL): 15A duration <100µs

Approvals

CE, cUL listed (file E57766), Gost Suitable for use in Nadcap and AMS2750D applications under System Accuracy Test calibration conditions	
--	--

Communications

No of ports	2 modules can be fitted
Slot allocation	Modbus RTU or I/O expander only in J comms port

Serial communications option

Protocols	Modbus RTU Slave Profibus DP DeviceNet EI-Bisync (818 style mnemonics) Modbus RTU master broadcast (1 parameter) I/O Expander
-----------	--

Isolation	264Vac, double insulated
Transmission standard	EIA232, EIA485, CAN (DeviceNet), Profibus
Ethernet communications option	
Protocol	Modbus TCP, 10baseT
Isolation	264Vac, double insulated
Transmission standard	802.3
Features	DHCP client, 4 simultaneous masters, preferred master

Main Process Variable Input

Calibration accuracy	<±0.1% of reading ±1LSD ⁽¹⁾
Sample rate	9Hz(110ms)
Isolation	264Vac double insulation from the PSU and communication
Input filter	Off to 59.9s. Default 1.6s
Zero offset	User adjustable over full range
User Calibration	2-point gain & offset

Thermocouple

Range	Uses 40mV and 80mV ranges dependent on type
Types	K, J, N, R, S, B, L, T, C, PL2, custom download x 2
Resolution	16 bits
Linearisation accuracy	<0.2% of reading
Cold junction compensation	>40:1 rejection of ambient change External reference of 0°C, 45°C and 50°C
Cold junction accuracy	<±1°C at 25°C ambient

Resistance Thermometer

Range	0-400Ω (-200°C to +850°C)
Resistance Thermometer types	3-wire Pt100 DIN 43760
Resolution (°C)	<0.050°C with 1.6sec filter
Resolution	16 bits
Linearity error	<±0.033% (best fit straight line)
Calibration error	<±0.310°C/°C, ±0.023% of measurement at 25°C
Drift with temperature	<±0.010°C/°C, ±25ppm/C of measurement from 25°C
Common mode rejection	<0.000085°C/V (maximum of 264Vrms)
Series mode rejection	<0.240°C/V (maximum of 280mV pk-pk)
Lead resistance	0Ω to 22Ω, matched lead resistance
Input impedance	100MΩ
Bulb current	200µA

40mV Range

Range	-40mV to +40mV
Resolution (µV)	<1.0µV with 1.6sec filter
Resolution	16 bits
Linearity error	<0.033% (best fit straight line)
Calibration error	<±4.6µV, ±0.053% of measurement at 25°C
Drift with temperature	<±0.2µV/°C, ±28ppm/C of measurement from 25°C

Common mode rejection

Series mode rejection	>175dB (maximum of 264Vrms)
Input leakage current	>101dB (maximum of 280mV pk-pk)
Input impedance	±14nA
Input impedance	100MΩ

80mV Range

Range	-80mV to +80mV
Resolution (µV)	<3.3µV with 1.6sec filter
Resolution	16 bits
Linearity error	<0.033% (best fit straight line)
Calibration error	<±7.5µV, ±0.052% of measurement at 25°C
Drift with temperature	<±0.2µV/°C, ±28ppm/C of measurement from 25°C

Common mode rejection

Series mode rejection	>175dB (maximum of 264Vrms)
Input leakage current	>101dB (maximum of 280mV pk-pk)
Input leakage current	±14nA
Input impedance	100MΩ

2V Range

Range	-1.4V to +2.0V
Resolution (mV)	<90µV with 1.6sec filter
Resolution	16 bits
Linearity error	<0.015% (best fit straight line)
Calibration error	<±420µV, ±0.044% of measurement at 25°C
Drift with temperature	<±125µV/°C, ±28ppm/C of measurement from 25°C

Common mode rejection

Series mode rejection	>155dB (maximum of 264Vrms)
Input leakage current	>101dB (maximum of 4.5V pk-pk)
Input leakage current	±14nA
Input impedance	100MΩ

10V Range

Range	-3.0V to +10.0V
Resolution (mV)	<550µV with 1.6sec filter
Resolution	16 bits
Linearity error	<0.007% of reading for zero source resistance. Add 0.003% for each 10Ω of source plus lead resistance
Calibration error	<±1.5mV, ±0.063% of measurement at 25°C
Drift with temperature	<±66µV/°C, ±60ppm/C of measurement from 25°C
Common mode rejection	>145dB (maximum of 264Vrms allowed)
Series mode rejection	>92dB (maximum of 5V pk-pk allowed)
Input impedance	62.5kΩ to 667kΩ depending on input voltage

Notes

- (1) Calibration accuracy quoted over full ambient operating range and for all input linearisation types
- (2) Contact Eurotherm for details of availability of custom downloads for alternative sensors

Digital IO (LA and LB)

Isolation	Not isolated from each other. 264Vac double insulation from the PSU and communication
-----------	---

Input

Rating	Voltage Level:	Closed 0 to 7.3Vdc Open 10.8 to 24Vdc
	Contact Closure:	Open >1200Ω Closed <480Ω
Functions		Includes program control, alarm acknowledge, SP2 select, manual, keylock, RSP select, standby

Output

Rating	18Vdc @ 15mA (min 9mA)
Functions	Includes control outputs, alarms, events, status

AA Relay

Type	Form C (changeover)
Rating	Min 1mA @ 1Vdc, Max 2A @ 264Vac resistive
	1,000,000 operations with external snubber
Isolation	264Vac double insulation
Functions	Includes control outputs, alarms, events, status

Input / Output Modules

IO Modules	3508:	3 modules can be fitted
	3504:	6 modules can be fitted

Analogue Input Module

Calibration accuracy	±0.2% of reading ±1LSD
Sample rate	9Hz (110ms)
Isolation	264Vac double insulation
Input filter	Off to 59.9s. Default 1.6s
Zero offset	User adjustable over full range
User Calibration	2-point gain & offset
Functions	Includes process input, remote setpoint, power limit

Thermocouple

Range	-100mV to +100mV
Types	K, J, N, R, S, B, L, T, C, PL2, custom
Resolution (µV)	<3.3µV @ 1.6s filter time
Effective resolution	15.9 bits
Linearisation accuracy	<0.2% of reading
Cold junction compensation	>25:1 rejection of ambient change External reference of 0°C, 45°C and 50°C
Cold junction accuracy	<±1°C at 25°C ambient

Resistance Thermometer

Range	0-400Ω (-200°C to +850°C)
Resistance Thermometer types	3-wire Pt100 DIN 43760
Resolution (°C)	<±0.08°C with 1.6sec filter
Effective Resolution	13.7 bits
Linearity error	<0.033% (best fit straight line)
Calibration error	<±(0.4°C + 0.15% of reading in °C)
Drift with temperature	<±(0.015°C + 0.005% of reading in °C) per °C
Common mode rejection	<0.000085°C/V (maximum of 264Vrms)
Series mode rejection	<0.240°C/V (maximum of 280mV pk-pk)
Lead resistance	0Ω to 22Ω, matched lead resistance
Input impedance	100MΩ
Bulb current	300μA

100mV Range

Range	-100mV to +100mV
Resolution (μV)	<3.3μV with 1.6s filter time
Effective resolution	15.9 bits
Linearity error	<0.033% (best fit straight line)
Calibration error	<±10μV, ± 0.2% of measurement at 25°C
Drift with temperature	<±0.2μV + 0.004% of reading per °C
Common mode rejection	>146dB (maximum of 264Vrms)
Series mode rejection	>90dB (maximum of 280mV pk-pk)
Input leakage current	<10nA
Input impedance	>100MΩ

2V Range

Range	-0.2V to +2.0V
Resolution (μV)	30μV with 1.6s filter time
Effective resolution	16.2bits
Linearity error	<0.033% (best fit straight line)
Calibration error	<±2mV + 0.2% of reading
Drift with temperature	<±0.1mV + 0.004% of reading per °C
Common mode rejection	>155dB (maximum of 264Vrms)
Series mode rejection	>101dB (maximum of 4.5V pk-pk)
Input leakage current	<10nA
Input impedance	>100MΩ

10V Range

Range	-3.0V to +10.0V
Resolution (μV)	<300μV with 1.6sec filter
Effective resolution	15.4 bits
Linearity error	<0.033% (best fit straight line)
Calibration error	<±(0.4°C + 0.15% of reading in °C)
Drift with temperature	<± 0.1mV + 0.02% of reading per °C
Common mode rejection	>145dB (maximum of 264Vrms)
Series mode rejection	>92dB (maximum of 5V pk-pk)
Input impedance	>69kΩ

Potentiometer Input

Type	Single channel
Resistance	100Ω to 15kΩ,
Excitation	0.5Vdc supplied by module
Isolation	264Vac double insulation
Functions	Includes valve position and remote setpoint

Analogue Control Output

Type	Single channel
Rating	0-20mA <600Ω 0-10Vdc >500Ω
Accuracy	±2.5%
Resolution	10 bits
Isolation	264Vac double insulation

Analogue Retransmission Output

Type	Single channel
Rating	0-20mA <600Ω 0-10Vdc >500Ω
Accuracy	±0.5%
Resolution	11 bits
Isolation	264Vac double insulation

Dual 4-20mA OP/24Vdc TxPSU

Type	Dual channel
Rating	Output: 4-20mAdc, <1KΩ TxPSU: 24Vdc, 22mA
Isolation	264Vac double insulation between channels
Functions	Either channel can be control output or TxPSU

Logic Input Modules

Module types	Triple contact closure, triple logic level
Isolation	No channel isolation. 264Vac double insulation from other modules and system
Rating	Voltage Level: Open -3 to 5Vdc @ <-0.4mA Closed 10.8 to 30Vdc @ 2.5mA
	Contact Closure: Open >28kΩ Closed <100Ω
Functions	Includes program control, alarm acknowledge, SP2 select, manual, keylock, RSP select, standby

Logic Output Modules

Module types	Single channel, triple channel
Isolation	No channel isolation. 264Vac double insulation from other modules and system
Rating	Single: 12Vdc @ 24mA, source Triple: 12Vdc @ 9mA, source
Functions	Includes control outputs, alarms, events, status

Relay Modules

Module types	Single channel Form A, Single channel Form C, dual channel Form A
Isolation	264Vac double insulation
Rating	Min 100mA @ 12Vdc, Max 2A @ 264Vac resistive Min 400,000 (max load) operations with external snubber
Functions	Includes control outputs, alarms, events, status

Triac Modules

Module types	Single channel, dual channel
Isolation	264Vac double insulation
Rating	<0.75A @ 264Vac resistive
Functions	Includes control outputs, alarms, events, status

Transmitter PSU Module

Type	Single channel
Isolation	264Vac double insulation
Rating	24Vdc @ 20mA

Transducer PSU Module

Type	Single channel
Isolation	264Vac double insulation
Bridge voltage	Software selectable 5Vdc or 10Vdc
Bridge resistance	300Ω to 15kΩ
Internal shunt resistor	30.1Ω @0.25%, used for calibration of 350Ω bridge at 80%

I/O Expander

Type	20 I/O: 4 Form C relays, 6 Form A relays, 10 logic inputs
	40 I/O: 4 Form C relays, 16 Form A relays, 20 logic inputs
Isolation	264Vac double insulation between channels
Ratings	Relay: Min 100mA @ 12Vdc, Max 2A @ 264Vac resistive Logic Input: Open -3 to 5Vdc @ <-0.4mA Closed 10.8 to 30Vdc @ 2.5mA
Communications	Using EX comms module in comms slot J

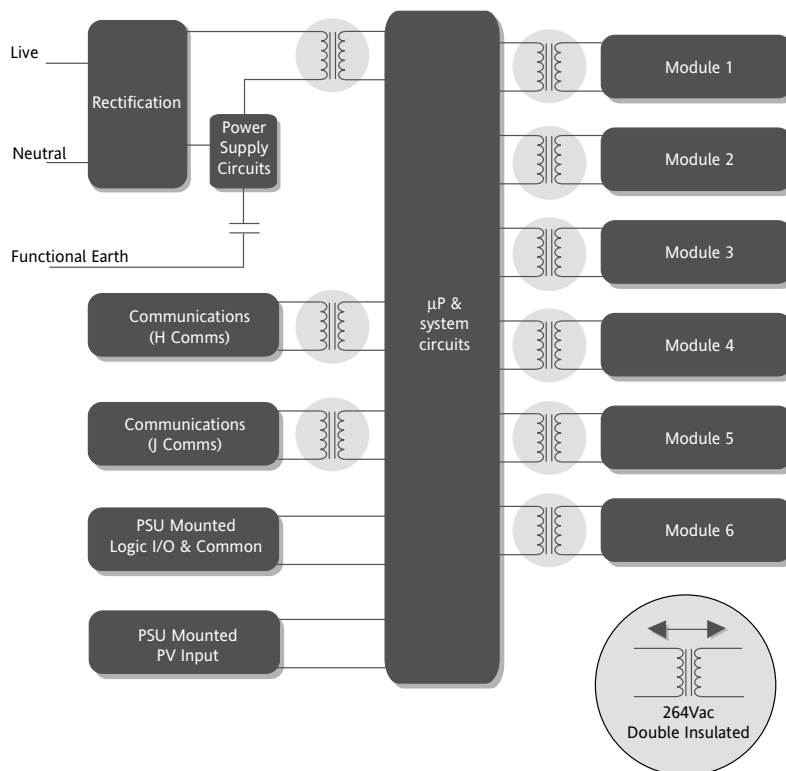
Software Features

Control	
Number of loops	2
Control types	PID, OnOff, VP, Dual SP
Cooling types	Linear, fan, oil, water
Modes	Auto, manual, forced manual, control inhibit
Overshoot inhibition	High and low cutbacks
Number of PID sets	3, selectable on PV, SP, OP, On Demand, program segment and remote input
Control options	Supply voltage compensation, feedforward, output tracking, OP power limiting, SBR safe output
Setpoint options	Remote SP with trim, SP rate limit, 2nd Setpoint, tracking modes

Setpoint programmer	
Program function	50 programs, max 500 segments
Program names	User defined up to 16 characters
No of profile channels	2 (1 if single loop)
Operation	Full or partially synchronised
Events	8 per channel (8 when fully synchronised)
	1 timed event, 1 PV event
Segment types	Rate, dwell, time, call, goback and wait
Digital inputs	Run, Hold, Reset, RunHold, RunReset, Adv Seg, Skip Seg
Servo action	Process value, setpoint
Power failure modes	Continue, ramp, reset
Other functions	Guaranteed soak, holdback, segment user values, wait inputs, PV hot start
Process Alarms	
Number	8
Type	High, low, devhi, devlo, devband
Latching	None, auto, manual, event
Other features	Delay, inhibit, blocking, display message, 3 priority levels
Digital Alarms	
Number	8
Type	PosEdge, negEdge, edge, high, low
Latching	None, auto, manual, event
Other features	Delay, blocking, inhibit, display message, 3 priority levels
Zirconia	
Number	1
Functions	Carbon potential, dewpoint, %O ₂ LogO ₂ , probe mV
Supported probes	Barber Colman, Drayton, MMICarbon, AACC, Accucarb, SSI, MacDhui, Bosch02, BoschCarbon
Gas reference	Internal or remote analogue input
Probe diagnostics	Clean recovery time, impedance measurement
Probe burn-off	Automatic or manual
Other features	Sooting alarm with tolerance setting, PV offsets

Humidity	
Number	1
Functions	Relative humidity, dewpoint
Measurement	Psychrometric (wet & dry) inputs
Atmosphere compensation	Internal or remote analogue input
Other features	Psychrometric constant adjust
Recipes	
Number	8
Parameters	24 per recipe
Length of Name	8 Characters
Selection	HMI, comms, strategy
Transducer calibration	
Number	2
Type	Shunt, load cell, comparison
Other features	Autotare
Communication tables	
Number	250
Function	Modbus remapping (indirection)
Data formats	Integer, IEEE (full resolution)
Application Blocks	
Soft wiring	Orderable options of 30, 60 120 or 250
User values:	16 real numbers with decimal point.
2 Input maths:	24 blocks, add, subtract, multiply, divide, absolute difference, maximum, minimum, hot swap, sample and hold, power, square root, Log, Ln, exponential, switch.
	24 blocks, AND, OR, XOR, latch, equal, not equal, greater than, less than, greater than or equal to, less
2 Input logic:	2 blocks. AND, OR, XOR
8 Input logic:	4 blocks. 8 sets of 8 values selected by input parameter
8 Input multiplexor:	3 blocks, average, min, max sum
8 Input multiple input	2 blocks, 2 Decades
BCD Input:	2 blocks, max, min, time above threshold
Input monitor:	2 blocks, 16-point linearisation fit
16 Point linearisation:	2 blocks, characterisation by Poly Fit table
Polynomial fit:	1 block, smooth transition between two values
Switchover:	4 blocks, OnPulse, OnDelay, OneShot, MinOn Time
Timer blocks:	2 blocks, Up or down, directional flag
Counter blocks:	2 blocks, alarm at threshold value
Totaliser blocks:	1 block, day & time, 2 time based alarms
Real time clock:	

ISOLATION DIAGRAM



HARDWARE/OPTIONS ORDERING CODE

Model Number	Function	Supply Voltage	Loops	Application	Programs	Recipes	Toolkit Wires	Fascia				
I/O Slot 1	I/O Slot 2	I/O Slot 3	I/O Slot 4 ⁽²⁾	I/O Slot 5 ⁽²⁾	I/O Slot 6 ⁽²⁾	H Comms Slot	J Comms Slot	Config Tools	Product Language	Manuals Language	Warranty	Calibration Certificate

Model Number
3504 1/4 DIN unit
3508 1/8 DIN unit

Function
CC Standard
F Profibus

Supply Voltage
VH 85 - 264Vac
VL 20-29Vac/dc

Loops
1 One loop
2 Two loops

Application
XX Standard
ZC Zirconia
VP Dual Valve ⁽¹⁾
Positioning

Programs
X No Programs
1 1 Program - 20 Segments
10 10 Programs - 500 Segments
25 25 Programs - 500 Segments
50 50 Programs - 500 Segments

Recipes
X No recipes
1 1 recipe
4 4 Recipes
8 8 recipes

Toolkit Wires
XXX 30 Wires
60 60 Wires
120 120 Wires
250 250 Wires

Fascia
G Eurotherm Green
S Silver

I/O Slots
1, 2, 3, 4 ⁽²⁾ , 5 ⁽²⁾ , 6 ⁽²⁾
XX No module fitted
R4 Change over relay
R2 2 Pin relay
RR Dual relay
R4 Triac
TT Dual triac
D4 Analogue control output
AM Analogue input (not slot 2 or 5)
D6 Analogue retrans mission output
TK Triple contact input
TL Triple logic input
TP Triple logic output
VU Potentiometer input
MS 24Vdc Transmitter PSU
G3 Transducer PSU 5 or 10Vdc
LO Isolated single logic OP
DO Dual 4-20mA OP/ 24Vdc TxPSU (not slot 3, 5 or 6)

H Comms Slot
XX Not fitted
A2 EIA232 Modbus
Y2 2-wire EIA485 Modbus
F2 4-wire EIA485 Modbus
AE 232 El-Bisynch
YE 2-wire EIA485 El-Bisynch
FE 4-wire EIA485 El-Bisynch
ET Ethernet Modbus 10base T TCP IP (incl RJ45 Assy)
PB Profibus DP ⁽¹⁾
PD Profibus with D ⁽¹⁾ type connector fitted
DN DeviceNet

J Comms Slot
XX Not fitted
A2 EIA232 Modbus
Y2 2-wire EIA485 Modbus
F2 4-wire EIA485 Modbus
EX IO Expander module

Config. Tools
XX None
IT Standard iTools (CD only)

Product Language
ENG English
FRA French
GER German
SPA Spanish
ITA Italian

Manual Language
ENG English
FRA French
GER German
SPA Spanish
ITA Italian

Warranty
XXXXX Standard
WL005 Extended

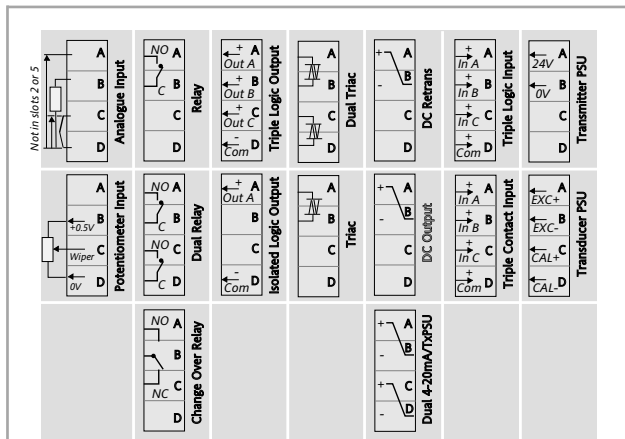
Calibration Certificates
XXXXX None
CERT1 Certificate of Conformity
CERT2 Factory input calibration per input

Example (order code)

3504/CC/VH/2/XX/50/X/60/S/R2/D4/AM/XX/XX/XX/A2/XX/XX/ENG/ENG/XXXXX/XXXXX

This code describes a two loop 3504 with 50 programs and 60 wires. Addition modules for dual relay, analogue control, analogue input and EIA232 communications. English language and manuals with silver fascia.

REAR TERMINAL CONNECTIONS

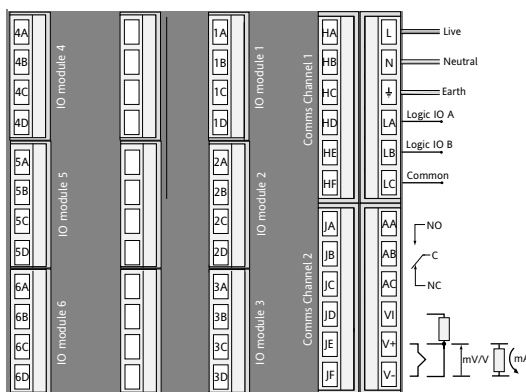


1. Only available with the Profibus Controller
2. I/O slots 4, 5 and 6 are only available on the 3504
3. Provides Valve Position option in Heat/Cool applications. Single channel VP included as standard.

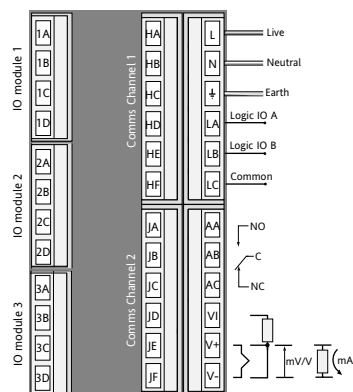
3500 ACCESSORIES

User guide	HA027987
Engineering manual	HA027988
2.49R Precision resistor	SUB35/ACCESS/249R.1
Configuration IR clip	iTools/None/3000IR
Configuration clip	iTools/None/3000CK
10IN,10OUT Expander	2000IO/VL/10LR/XXXX
20IN,20OUT Expander	2000IO/VL/20LR/20LR

3504



3508



CONFIGURATION CODE

Config.	Loop 1 Units	Loop 1 Function	Loop 1 PV	Loop 1 Range Low	Loop 1 Range High	Loop 2 Units	Loop 2 Function	Loop 2 PV	Loop 2 Range Low	Loop 2 Range High	Alarm 1	Alarm 2	Alarm 3
Alarm 4	Logic LA	Logic LB	Relay AA	I/O Slot 1	I/O Slot 2	I/O Slot 3	I/O Slot 4 ⁽⁴⁾	I/O Slot 5 ⁽⁵⁾	I/O Slot 6 ⁽⁶⁾				

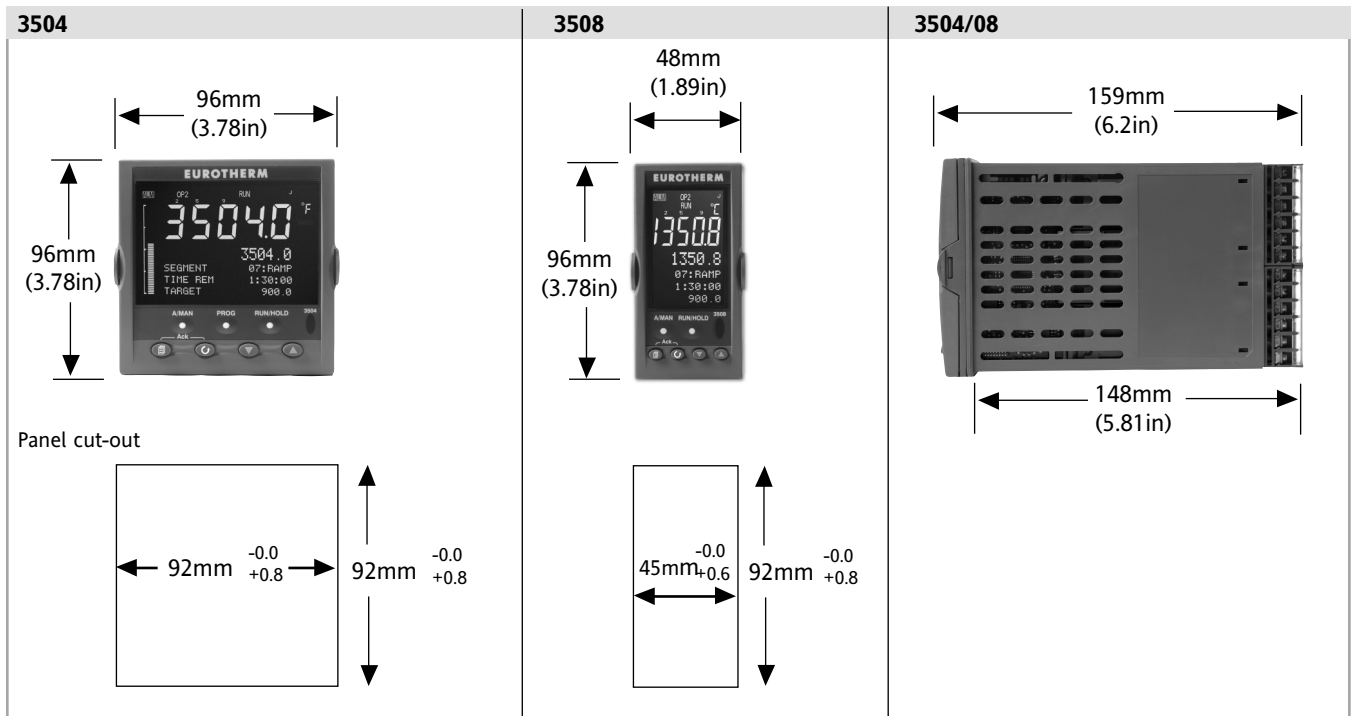
Config.	Loop 1 Function	Loop 1 PV	Loop 2 Function	Loop 2 PV	
STD Standard config ⁽¹⁾ CFG Factory configured	PX Single Chan. PID FX Single Chan. VP with Feedback VX Single Chan. VP without Feedback NX Single Chan. On/Off PP Dual Chan. PID PN Dual Chan. PID/OnOff FF Dual Chan. VP with Feedback VV Dual Chan. VP without Feedback PF Dual Chan. PID/VP with Feedback PV Dual Chan. PID/VP without Feedback	X Unconfigured J J Thermocouple K K Thermocouple T T Thermocouple L L Thermocouple N N Thermocouple R R Thermocouple S S Thermocouple B B Thermocouple P Platinell II C C Thermocouple Z Pt 100 A 4-20mA Linear Y 0-20mA Linear W 0-5Vdc Linear G 1-5Vdc Linear V 0-10Vdc Linear Q Custom Curve	XX Single Loop Only PX Single Chan. PID FX Single Chan. VP with Feedback VX Single Chan. VP without Feedback NX Single Chan. On/Off PP Dual Chan. PID PN Dual Chan. PID/OnOff FF Dual Chan. VP with Feedback VV Dual Chan. VP without Feedback PF Dual Chan. PID/VP with Feedback PV Dual Chan. PID/VP without Feedback	X Unconfigured J J Thermocouple K K Thermocouple T T Thermocouple L L Thermocouple N N Thermocouple R R Thermocouple S S Thermocouple B B Thermocouple P Platinell II C C Thermocouple Z Pt 100 A 4-20mA Linear Y 0-20mA Linear W 0-5Vdc Linear G 1-5Vdc Linear V 0-10Vdc Linear Q Custom Curve	
Loop 1 Units C Centigrade F Fahrenheit % Percent H %RH P PSI B Bar M mBar X None	Loop 2 Units C Centigrade ⁽²⁾ F Fahrenheit ⁽²⁾ % Percent H %RH P PSI B Bar M mBar X None	Loop 1 Range Low XXXXX Enter value with decimal point	Loop 2 Range Low XXXXX Enter value with decimal point	Loop 1 Range High XXXXX Enter value with decimal point	Loop 2 Range High XXXXX Enter value with decimal point

- If standard config is selected an instrument without configuration will be supplied.
- If C or F units are selected they must be the same for both loops. If C or F are not selected for Loop 1 they cannot be selected for Loop 2
- I/O slots 4, 5 and 6 are only available on the 3504.
- CH1 = Heat, CH2 = Cool

Alarm 1	Alarm 2	Alarm 3	Alarm 4	Logic LA	Logic LB	Relay AA	Slot functions 1 - 6 ⁽⁴⁾
XXX Unconfigured 1_ Loop 1 2_ Loop 2 _FH Full scale high _FL Full scale low _DH Deviation high _DL Deviation low _DB Deviation band	XXX Unconfigured 1_ Loop 1 2_ Loop 2 _FH Full scale high _FL Full scale low _DH Deviation high _DL Deviation low _DB Deviation band	XXX Unconfigured 1_ Loop 1 2_ Loop 2 _FH Full scale high _FL Full scale low _DH Deviation high _DL Deviation low _DB Deviation band	XXX Unconfigured 1_ Loop 1 2_ Loop 2 _FH Full scale high _FL Full scale low _DH Deviation high _DL Deviation low _DB Deviation band	XX Unconfigured 1_ Loop 1 2_ Loop 2 _B Sensor Break _M Manual Select _H Control Ch1 OP _C Control Ch2 OP _R Remote SP _S Setpoint 2 Enable A_ Alarm _A Acknowledge All Alarms _1 Alarm 1 OP _2 Alarm 2 OP P_ Programmer _1 Prg Event 1 _2 Prg Event 2	XX Unconfigured 1_ Loop 1 2_ Loop 2 _B Sensor Break _M Manual Select _H Ch1 OP _C Ch2 OP _R Remote SP _S Setpoint 2 Enable A_ Alarm _A Acknowledge All Alarms _1 Alarm 1 OP _2 Alarm 2 OP P_ Programmer _1 Prg Event 1 _2 Prg Event 2	XX Unconfigured 1_ Loop 1 2_ Loop 2 _H Control Ch1 OP _C Control Ch2 OP _B Sensor Break (any loop) A_ Alarm _A Any Alarm Active _N New Alarm Active _1 Alarm 1 OP _2 Alarm 2 OP P_ Programmer _1 Prg Event 1 _2 Prg Event 2	XXX Unconfigured 1_ Loop 1 2_ Loop 2 Changeover Relay _HX Control Ch1 OP _CX Control Ch2 OP _BX Sensor Break 2-Pin Relay _HX Control Ch1 OP _CX Control Ch2 OP _BX Sensor Break Single Logic _HX Control Ch1 OP _CX Control Ch2 OP Single Triac _HX Control Ch1 OP _CX Control Ch2 OP Dual Relay _HC Ch1 OP & Ch2 _VT VP Ch1 _VR VP Ch2 P12 Prg Event 1 & 2 P34 Prg Event 3 & 3 P56 Prg Event 5 & 6 P78 Prg Event 7 & 8 A12 Alarm 1 & 2 OP A34 Alarm 3 & 4 OP HHX Ch1 OP for loops 1 & 2 CCX Ch2 OP for loops 1 & 2 SBR Sensor Break both loops Dual 4-20mA/TxPSU XXX Unconfigured * For range select third digit from Table 1
Triple Logic Input --- Select function below for each channel X Unconfigured M Loop 1 Manual N Loop 2 Manual Q Loop 1 Remote SP V Loop 2 Remote SP S Loop 1 Setpoint 2 T Loop 2 Setpoint 2 E Acknowledge All Alarms P Program Run R Program Reset H Program Hold Triple Logic OP --- Select function below for each channel X Unconfigured F Loop 1 Ch1 OP G Loop 1 Ch2 OP K Loop 2 Ch1 OP L Loop 2 Control Ch2 OP A Alarm 1 OP B Alarm 2 OP C Alarm 3 OP D Alarm 4 OP 1 Program Event 1 2 Program Event 2 3 Program Event 3 4 Program Event 4 5 Program Event 5 6 Program Event 6 7 Program Event 7 8 Program Event 8	Table 1 A 4-20mA Linear Y 0-20mA Linear W 0-5Vdc Linear G 1-5Vdc Linear V 0-10Vdc Linear						

Example
CFG/C/PX/PX/K/1200/H/0.0/100.0/1FH/1FL/XXX/XXX/A1/A2/SB/2HC/1HA/2PV/XXX/XXX/XXX
 This code configures the example hardware code as
 Loop1, 0-1200°C type K with heat/cool relays. High and low alarms on logic LA and LB
 Loop2, 4-20mA input ranged 0.0-100.0 %RH. 4-20mA control output
 Sensor (any) break alarm on AA relay

DIMENSIONAL DETAILS



Eurotherm: International sales and service

Understanding and providing local support is a key part of Eurotherm's business. Complementing worldwide Eurotherm offices are a whole range of partners and a comprehensive technical support team... a soothing melody to ensure you get a service you will want to go back to.

AUSTRALIA Sydney
Eurotherm Pty. Ltd.
Telephone (+61 2) 9838 0099
Fax (+61 2) 9838 9288
E-mail info@eurotherm.com.au

AUSTRIA Vienna
Eurotherm GmbH
Telephone (+43 1) 7987601
Fax (+43 1) 7987605
E-mail eurotherm@eurotherm.at

BELGIUM & LUXEMBURG Huy
Eurotherm S.A./N.V.
Telephone (+32) 85 274080
Fax (+32) 85 274081
E-mail sales@eurotherm-belgium.be

BRAZIL Campinas-SP
Eurotherm Ltda.
Telephone (+5519) 3707 5333
Fax (+5519) 3707 5345
E-mail eurothermltda@eurothermltda.com.br

DENMARK Copenhagen
Eurotherm Danmark A/S
Telephone (+45 70) 234670
Fax (+45 70) 234660
E-mail info@eurotherm.se

FINLAND Abo
Eurotherm Finland
Telephone (+358) 22506030
Fax (+358) 22503201

FRANCE Lyon
Eurotherm Automation SA
Telephone (+33 478) 664500
Fax (+33 478) 352490
E-mail ea@automation.eurotherm.co.uk

GERMANY Limburg
Eurotherm Deutschland GmbH
Telephone (+49 6431) 2980
Fax (+49 6431) 298119
E-mail info@regler.eurotherm.co.uk

HONG KONG & CHINA
Eurotherm Limited North Point
Telephone (+85 2) 28733826
Fax (+85 2) 28700148
E-mail eurotherm@eurotherm.com.hk

Guangzhou Office
Telephone (+86 20) 8755 5099
Fax (+86 20) 8755 5831

Beijing Office
Telephone (+86 10) 6567 8506
Fax (+86 10) 6567 8509

Shanghai Office
Telephone (+86 21) 6145 1188
Fax (+86 21) 6145 1187

INDIA Chennai
Eurotherm India Limited
Telephone (+91 44) 24961129
Fax (+91 44) 24961831
E-mail sales@eurothermdel.com

IRELAND Dublin
Eurotherm Ireland Limited
Telephone (+353 1) 469180
Fax (+353 1) 4691300
E-mail info@eurotherm.ie

ITALY Como
Eurotherm S.r.l
Telephone (+39 31) 975111
Fax (+39 31) 977512
E-mail info@eurotherm.it

KOREA Seoul
Eurotherm Korea Limited
Telephone (+82 31) 2738507
Fax (+82 31) 2738508
E-mail help@eurotherm.co.kr

NETHERLANDS Alphen a/d Rijn
Eurotherm B.V.
Telephone (+31 172) 411752
Fax (+31 172) 417260
E-mail sales@eurotherm.nl

NORWAY Oslo
Eurotherm A/S
Telephone Oslo (+47 67) 592170
Fax (+47 67) 118301
E-mail info@eurotherm.se

SPAIN Madrid
Eurotherm España SA
Telephone (+34 91) 6616001
Fax (+34 91) 6619093
E-mail ventas@iberica.eurotherm.co.uk

SWEDEN Malmo
Eurotherm AB
Telephone (+46 40) 384500
Fax (+46 40) 384545
E-mail info@eurotherm.se

SWITZERLAND Freienbach
Eurotherm Produkte (Schweiz) AG
Telephone (+41 55) 4154400
Fax (+41 55) 4154415
E-mail epsag@eurotherm.ch

UNITED KINGDOM Worthing
Eurotherm Limited
Telephone (+44 1903) 268500
Fax (+44 1903) 265982
E-mail info@eurotherm.co.uk
Web www.eurotherm.co.uk

U.S.A. Leesburg VA
Eurotherm Inc.
Telephone (+1 703) 443 0000
Fax (+1 703) 669 1300
E-mail info@eurotherm.com
Web www.eurotherm.com

ED47

© Copyright Eurotherm Limited 2006

Invensys, Eurotherm, the Eurotherm logo, Chessell, Mini8 and Wonderware are trademarks of Invensys plc, its subsidiaries and affiliates. All other brands may be trademarks of their respective owners.

All rights are strictly reserved. No part of this document may be reproduced, modified, or transmitted in any form by any means, nor may it be stored in a retrieval system other than for the purpose to act as an aid in operating the equipment to which the document relates, without the prior written permission of Eurotherm limited.

Eurotherm Limited pursues a policy of continuous development and product improvement. The specifications in this document may therefore be changed without notice. The information in this document is given in good faith, but is intended for guidance only. Eurotherm Limited will accept no responsibility for any losses arising from errors in this document.